

January 31, 2024

BIRD Foundation

ARIZONA
COMMERCE AUTHORITY



ACA APPROACH

VISION

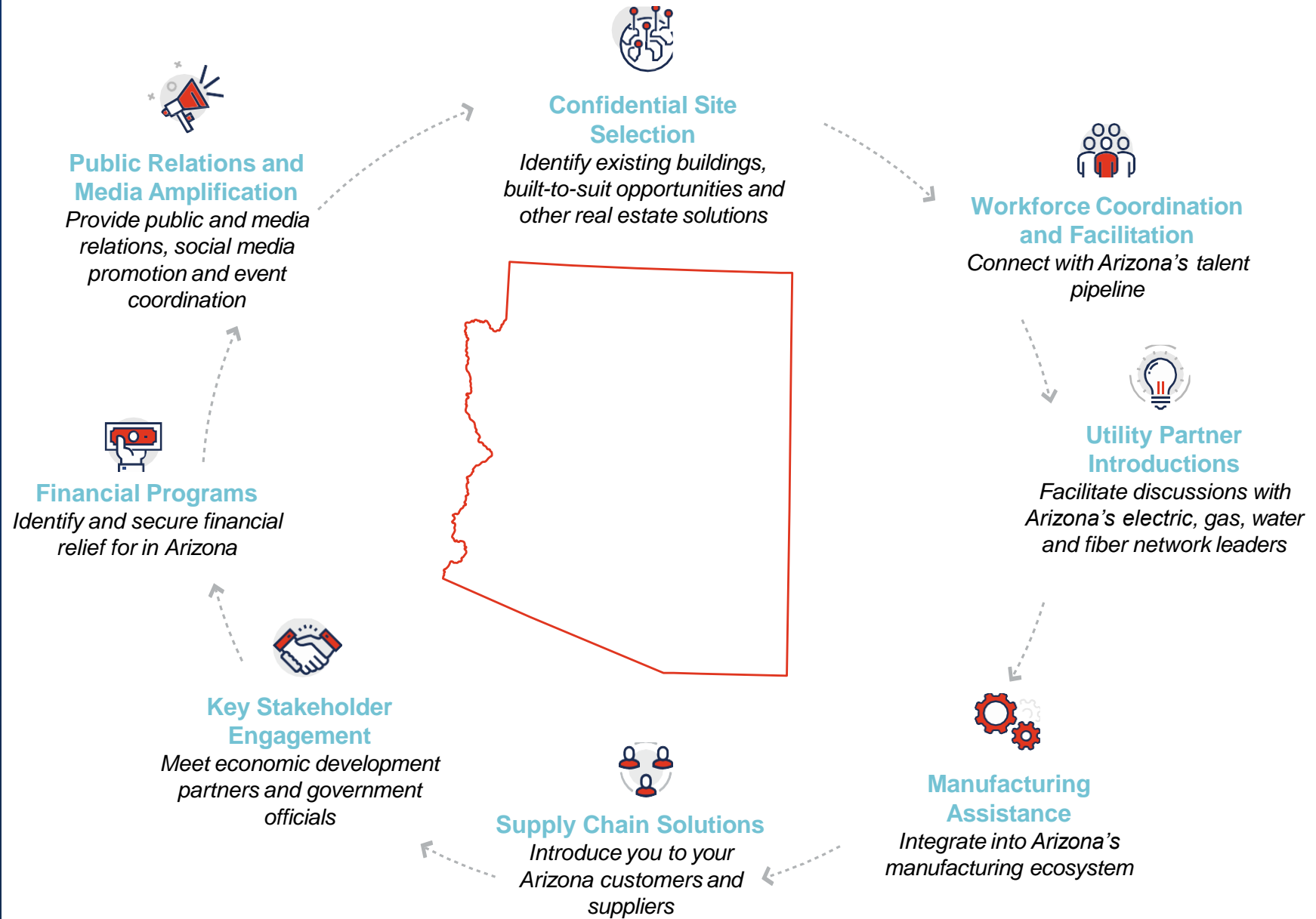
Arizona is the premier global destination for business and innovation, with an economy that delivers opportunity for all Arizonans.

MISSION

To continually grow and strengthen Arizona's economy by helping businesses in targeted, high-growth industries create quality jobs statewide for Arizona citizens.



YOUR ARIZONA PARTNER



Semiconductor Manufacturers & Suppliers



Aerospace & Defense



Cybersecurity



Optics & Photonics



Medical Technology



Automated & Electric Vehicles



Data Centers



Battery & Energy Storage



INTERNATIONAL FOOTPRINT

**REPUBLIC
OF KOREA**
SEOUL



EUROPE
FRANKFURT,
GERMANY



ISRAEL
TEL AVIV



MEXICO
MEXICO CITY
CHIHUAHUA



TAIWAN
TAIPEI



ARIZONA
Trade & Investment Offices



THANK YOU

Caleb Rhodes
calebr@azcommerce.com

ARIZONA
COMMERCE AUTHORITY





Contact Information



Allison Bakovic, Ph.D.

Vice President, Bioscience
Business Development

602.262.8617
abakovic@gpec.org



GPEC Services

► Operating Cost Comparison

- Perform annual operating cost comparisons across major markets.
- Analyze real estate, labor, utilities, taxes and incentives.

► Regional Labor Market Data

- Provide current wage rates, labor force and skill levels based on occupation and industry.
- Analyze labor force availability data and create custom drive time analysis.
- Connect with local employers for HR insight.

► Site Selection Assistance

- Aggregate a comprehensive listing of value-based assets, unique buildings and shovel-ready sites.
- Provide easy property search by size, location, price, zoning and more.

► Economic Impact Analysis

- Evaluate project's economic impact and community benefit.
- Prepare geospatial analysis.

► Connectivity To Key Resources

- Introduce your company to community college, university and key workforce assets.
- Coordinate with state and local regulatory authorities.
- Connect you to business leaders within the region.

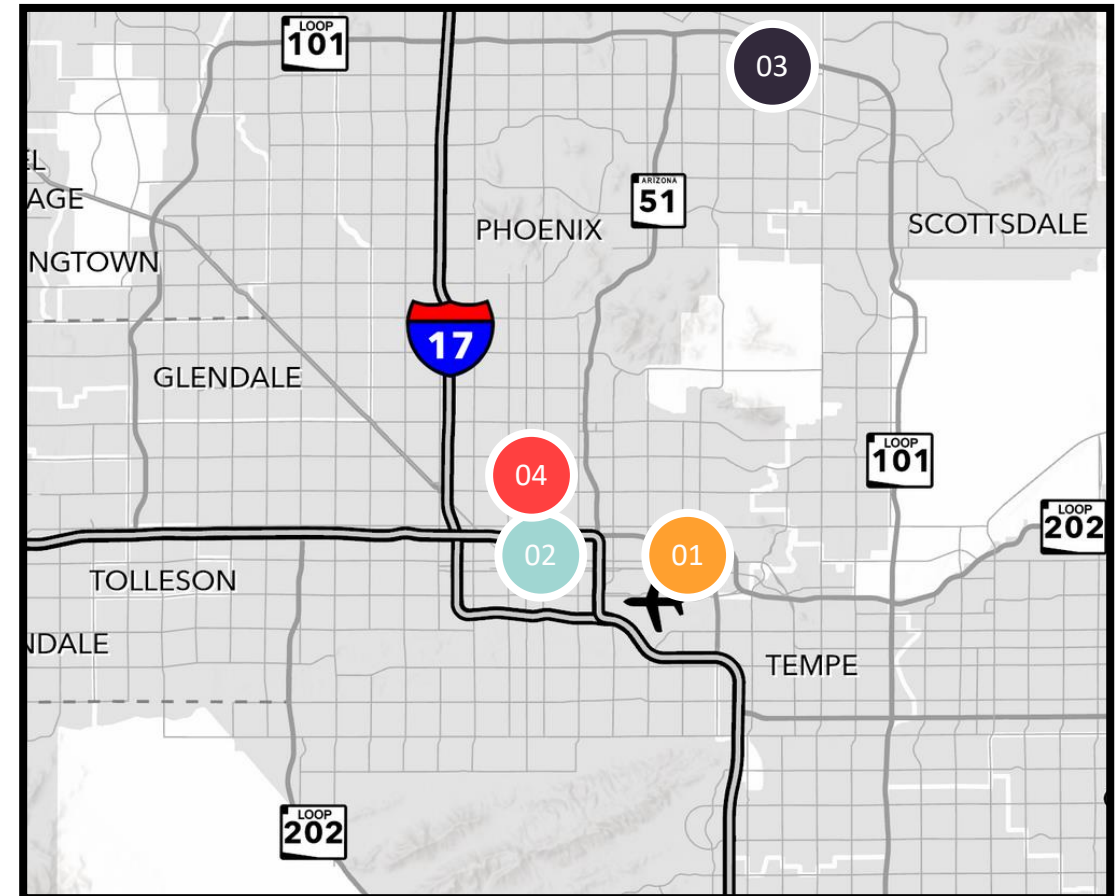
► Public Relations Assistance

- Draft a press announcement and coordinate quotes from key stakeholders on behalf of the client.
- Press announcement distribution to media outlets.
- Support and coordination for ribbon cutting and grand opening events.



Regional Bio-Ecosystem

Regional Bio-Ecosystem





The Phoenix Bioscience Core encompasses more than 20 Institutes of Research Excellence including three public research universities, TGen, IGC, Exact Sciences and several major health care systems. The PBC is a 30-acre urban life sciences hub that provides unique collaboration opportunities for innovators, entrepreneurs, researchers and industry leaders to accelerate their discoveries through public, federal and private research programs.



MedTech Accelerator

The MedTech Accelerator is a flagship program of the Mayo Clinic and Arizona State University Alliance for Health Care, providing early-stage medical device and health care tech companies with entrepreneurial curriculum and personalized business development plans to accelerate go-to-market and investment opportunities.



WearTech Applied Research Center was created by Partnership for Economic Innovation in 2019 to help launch a future-of-health technology ecosystem around Arizona's thriving biomedical scene.

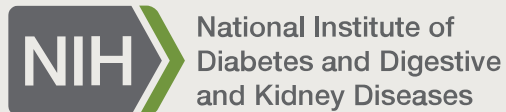
The Center Connects entrepreneurs and companies seeking to commercialize emerging healthcare technology with world-class research teams working at the forefront of wearable, biomedical innovation.



Created by GateWay Community College and the Maricopa County Community College District, The Center for Entrepreneurial Innovation (CEI) provides incubation space for bioscience entrepreneurs. Since 2013, CEI has supported over 75 startups which have created 872 jobs, secured \$135M in capital and generated more than \$177M in total gross revenue.



MedTech Accelerator



PHOENIX ROBOTICS GROUP, LLC



Sequitur Health



Tech Hubs Strategy Development Grant

The GPEC-led Medical Device Manufacturing Multiplier Strategy Development Consortium (MDM2) has received a planning grant as part of the EDA's Tech Hubs program.



MDM2 was one of 29 Strategic Development Grant (SDG) recipients across the U.S. and the only group in Arizona to receive an award during this first phase of the program.

This award is designed to further bioscience innovation, create more investment opportunities and boost employment growth.

The SDG funding will enable MDM2 to accelerate regional economic growth in the manufacturing of medical devices driven by emerging technologies such as artificial intelligence and machine learning.

Greater Phoenix Greater Together

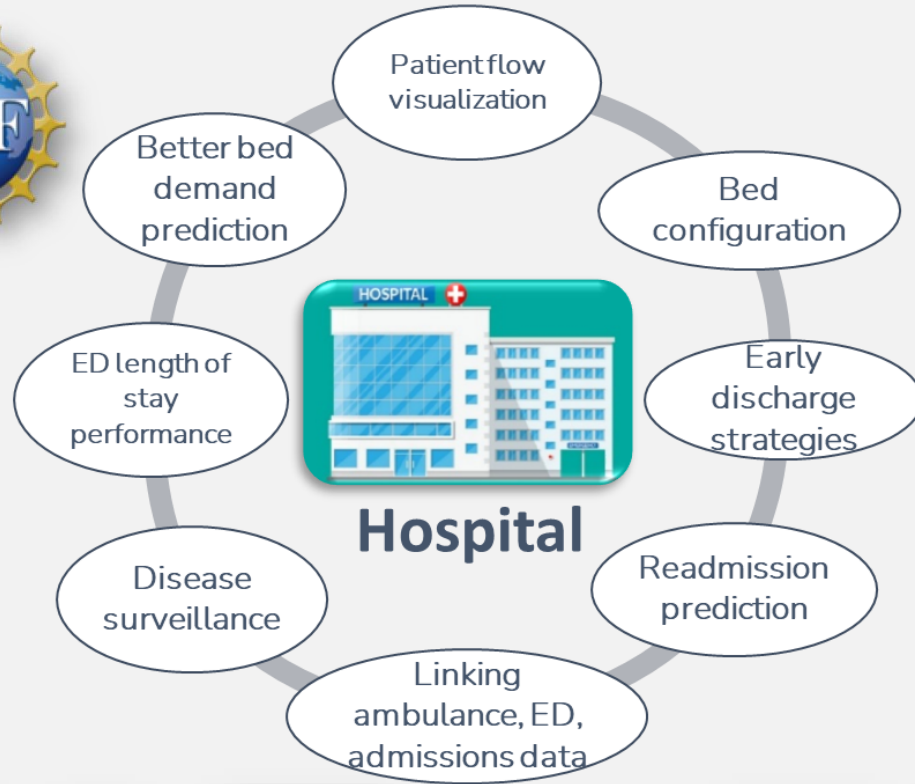
NSF IUCRC Center to Stream Healthcare In-Place (C2SHIP)



Janet Roveda, C2SHIP Directors



Center to Stream Healthcare in Place (C2SHIP)



IUCRC

C2SHIP.ORG



THE PARTNERSHIP



Government

NSF catalyzes partnership.
Other government entities fund
research relevant to their needs



University

Provides research, infrastructure,
human capital, and technical
expertise.

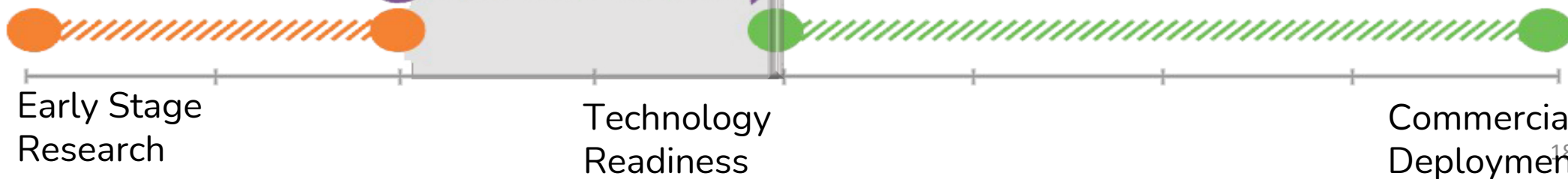


Industry

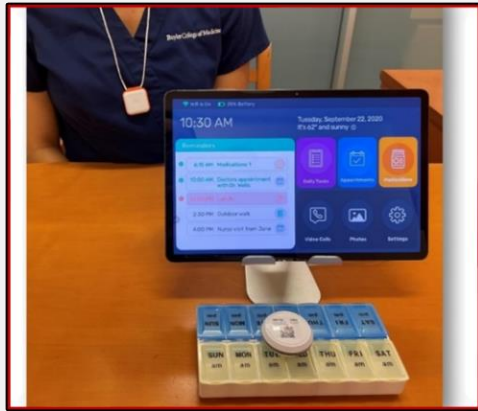
Provides funding for research
and insight for industrially
relevant projects

C2SHIP FOCUS

C2SHIP is focused on bridging the gap
between early academic research and
commercial readiness to accelerate
decentralized healthcare model



Competency



• Design

- Wearables/digital health/IoT/In home device
- Form factor optimization/Smart materials

• Stream data/Data Fabric

- Patient interface/telemedicine/Data visualization
- AI/Data fabric

• Prototype testing

- Clinical study/Feasibility
- Designing clinical trial/Bed to Bench

Thrust



• Post hospital care

- Value based outcomes
- Connected health/Healthy recovery

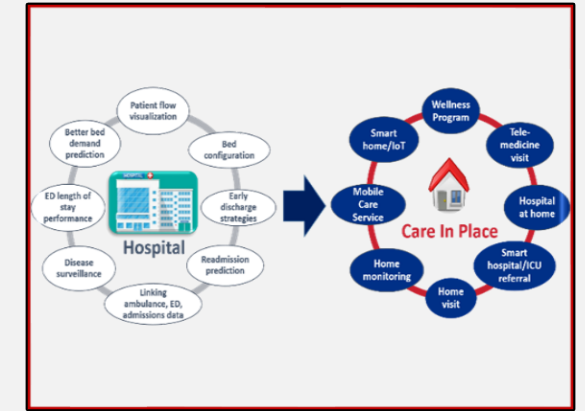
• Care at home

- Wellness/Preventive care/Chronic care
- Acute care/Triaging/Smart referral

• Decentralized clinical trials

- Remote patient monitoring
- Adherence reinforcement/retention

Values



• Direct Research Impact

- 10% IDC / \$1 → \$33
- IP access

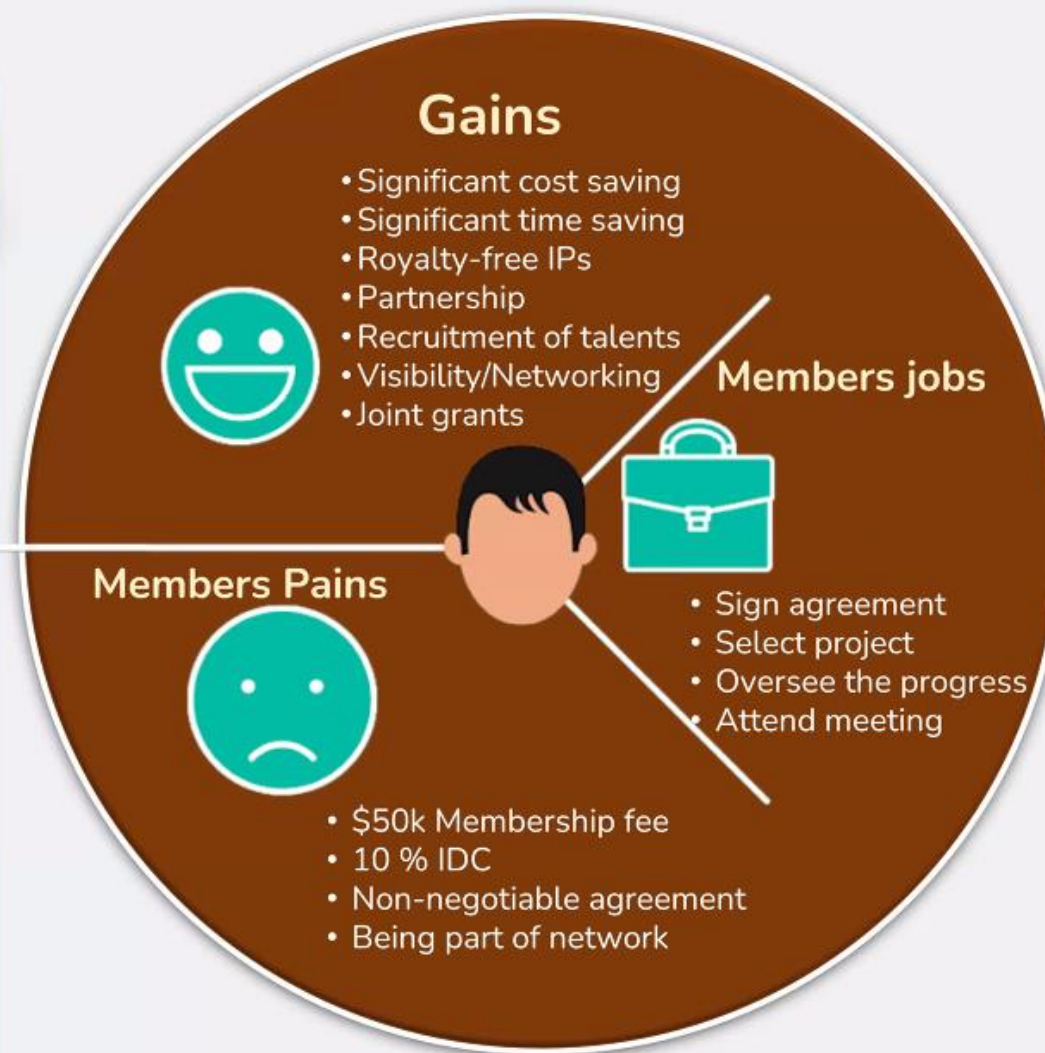
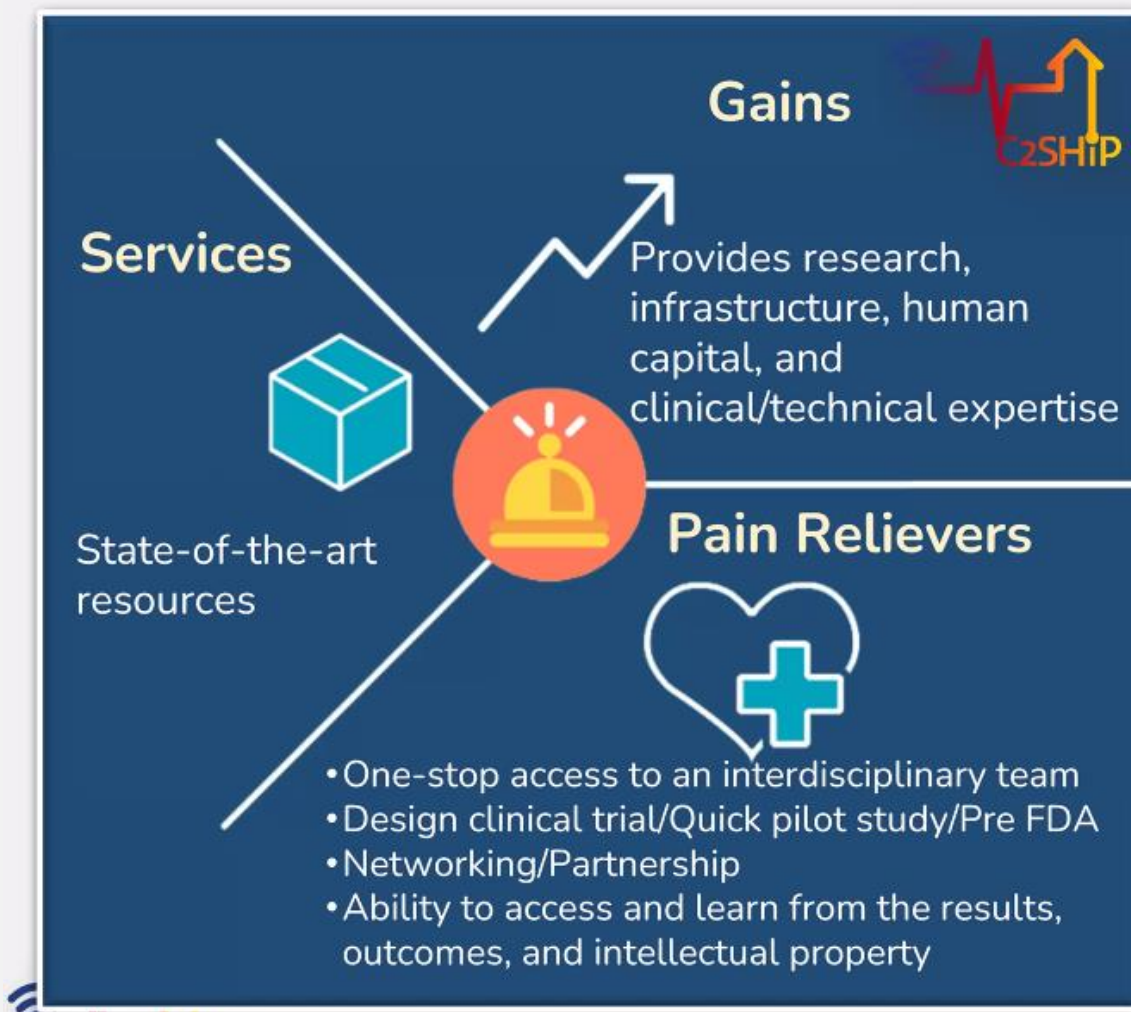
• Access to Network/Talents

- 6 Academic sites
- 21+ industrial members

• Education and Training

- Organizing workshop
- Training next generation of scientists/clinicians

C2SHIP Value Propositions

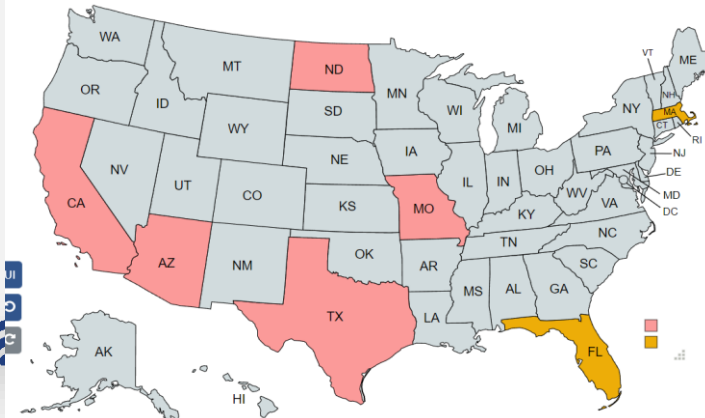


C2SHIP Members 2022-2023



20 Million Patients Encounter

400,000+ Surgeries 1500,000+ ER visits



All information proprietary and confidential

C2SHIP Funding 2023 (5/1)-Today

Operational Funding and Total Funding	2021-current
Total Funding	\$5.3 M (we expect to have close to \$10 M in two more years)
NSF IUCRC	\$ 1.5 M
Other NSF supplement	\$370 K(Caltech, USC, and UArizona START)
Member Fees	\$ 1.5m (by 4/30)
State	\$1.0 M (Arizona TRIF)
Other Federals	\$ 600 K (NIH PAN, R21) + \$100K (one health)
Non-Federal	\$0

